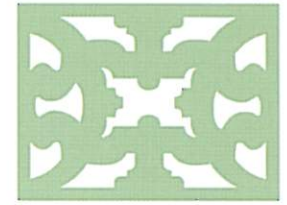
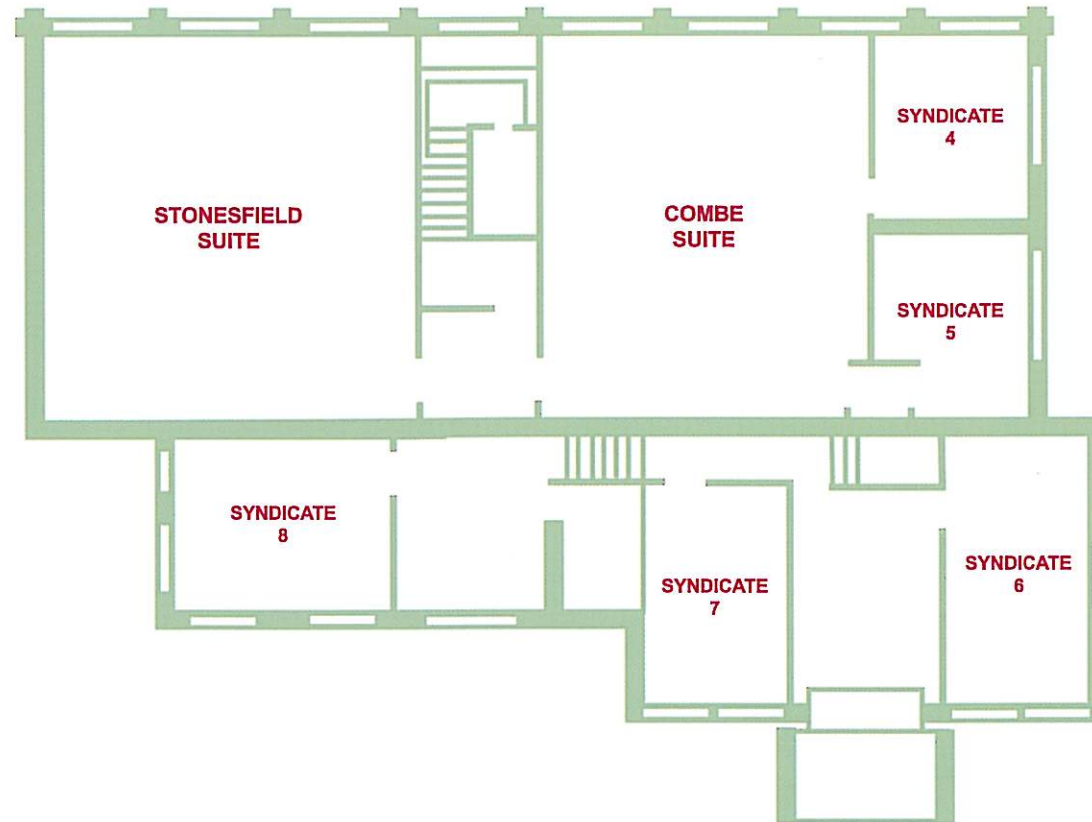


Lindsay Building - First Floor

Floor Plans & Capacity



Eynsham Hall



Room	Dimensions (m)	Height (m)	Area (sq m)	Boardroom	U-shape	Theatre	Classroom	Reception/ Buffet	Lunch/ Dinner	Dinner dance
Combe	7.9 x 8.8	3.2	69	22	20	36	24	-	-	-
Syndicate 4-7	-	-	-	8	-	-	-	-	-	-
Stonesfield	8.9 x 8.8	3.2	78	26	22	50	34	-	-	-
Syndicate 8	-	-	-	10	-	-	-	-	-	-

Technical	Door W (m)	Floor Level	Daylight	Tungsten	Blackout	Dimmers	13 amp sockets	3 phase	Air con	Telephone points	TV aerial	PA
Combe	0.75	First	yes	no	yes	no	10	-	yes	1	-	no
Syndicate 4-7	0.75	First	yes	no	no	no	6	-	yes	1	-	no
Stonesfield	0.75	First	yes	no	yes	no	16	-	yes	1	-	no
Syndicate 8	0.75	First	yes	no	no	no	6	-	yes	1	-	no

For bookings or more information Please call 01993 885 200