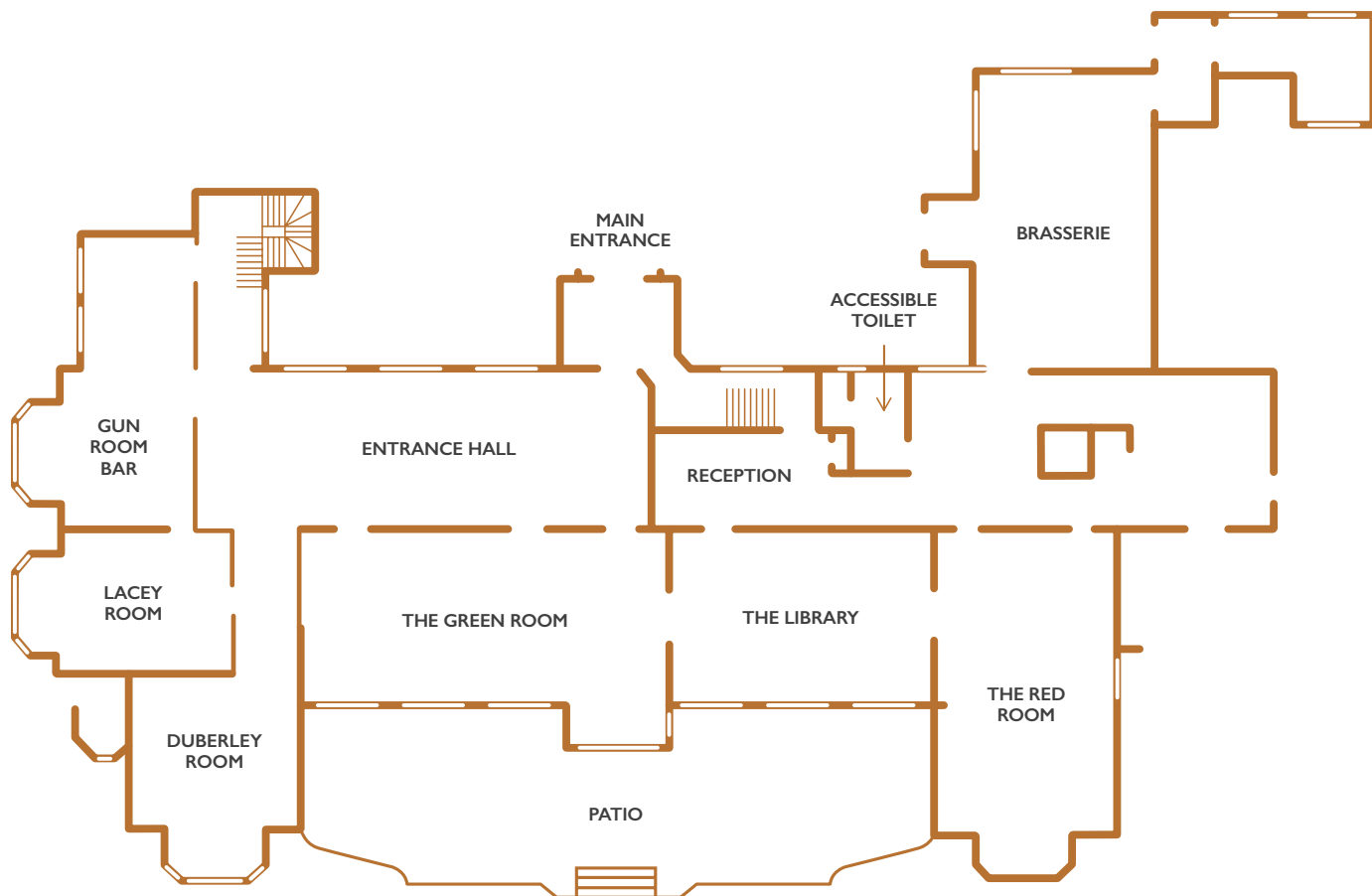


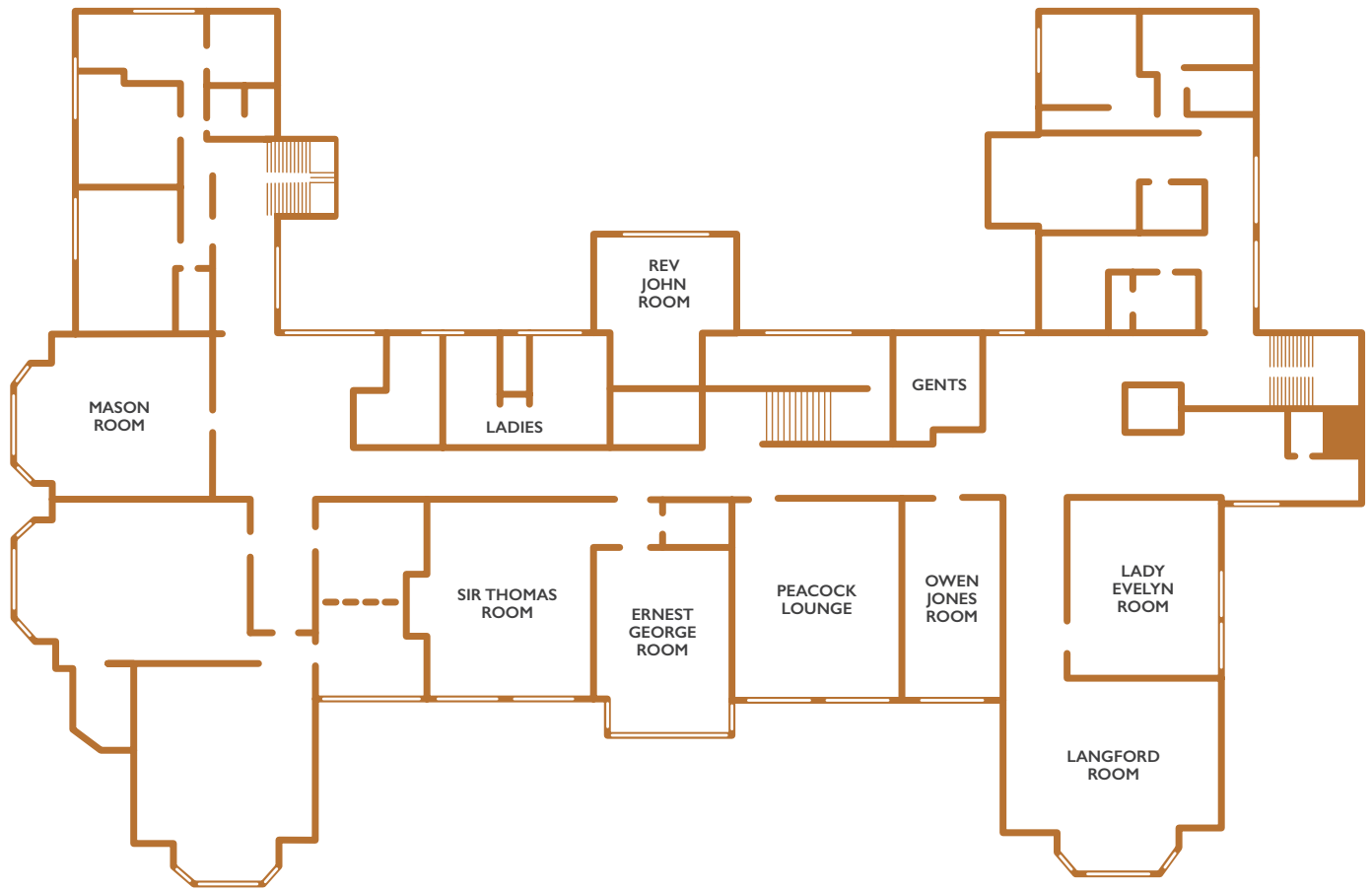
## Ground Floor Floor Plans & Capacity



Room	Dimensions (m)	Height (m)	Area (sqm)	Boardroom	U-shape	Theatre	Classroom	Reception / Buffet	Banquet	Cabaret
Green Room	15.2 x 7.6	4.5	115	46	42	160	70	200	100	65
Lacey Room	6.7 x 5.7	3.4	38	16	-	-	-	-	-	-
Duberley Room	7.6 x 6.7	3.4	50	20	18	40	20	-	-	20

Technical	Door W (m)	Floor Level	Daylight	Blackout	Dimmers	13 Amp Sockets	3 phase	Air Con	Telephone Points	Superfast Broadband	TV Aerial
Green Room	1.5	Ground	Yes	Yes	Yes	18	Yes	No	1	Yes	-
Lacey Room	0.9	Ground	Yes	Yes	Yes	4	-	No	1	Yes	Yes
Duberley Room	0.9	Ground	Yes	No	No	2	-	No	1	Yes	No

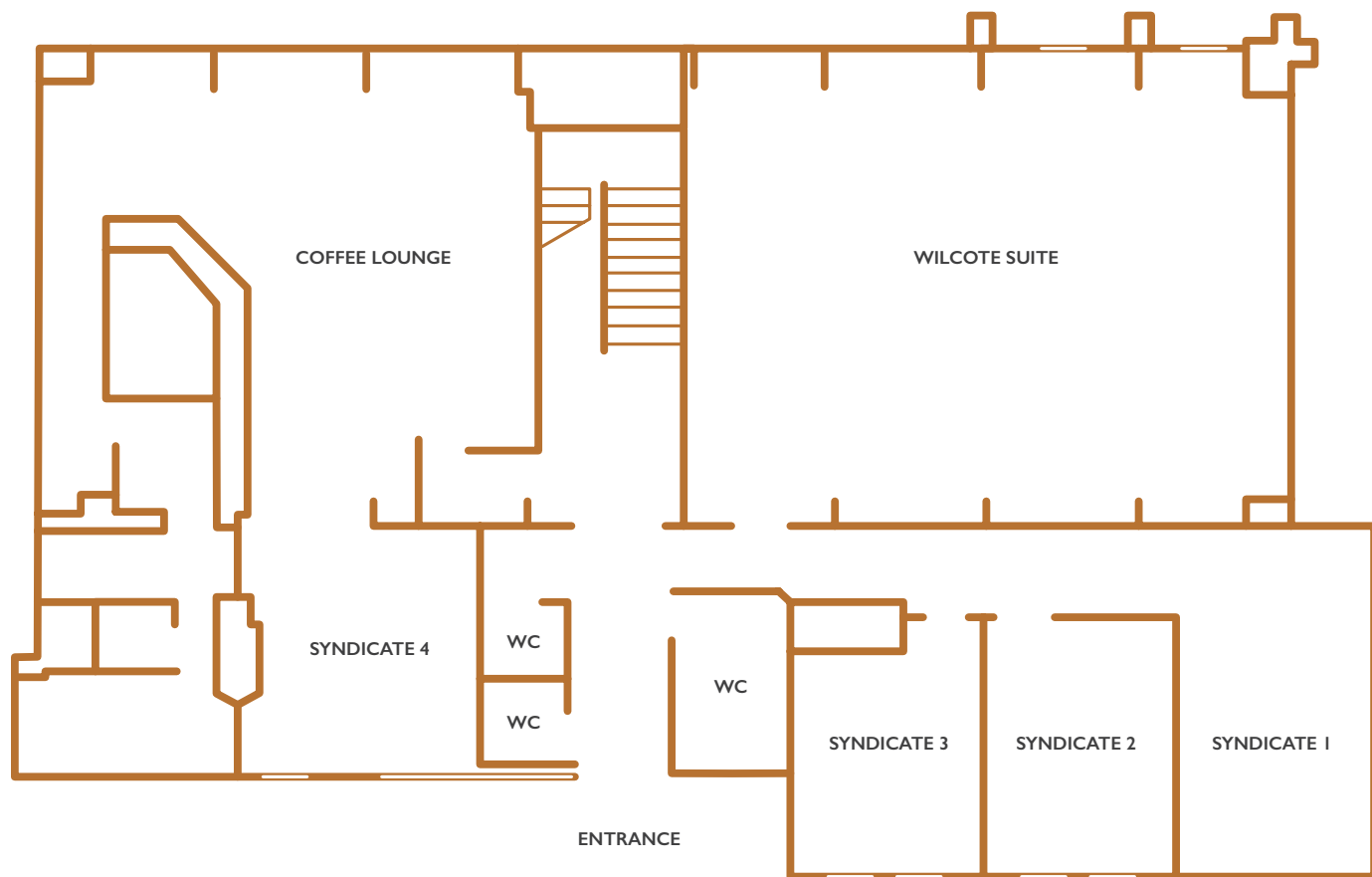
## First Floor Floor Plans & Capacity



Room	Dimensions (m)	Height (m)	Area (sqm)	Boardroom	U-shape	Theatre	Classroom	Cabaret
Langford Room	7.0 x 6.7	-	46	18	16	36	20	16
Owen Jones Room	7.0 x 4.0	-	28	10	-	-	-	-
Lady Evelyn Room	6.7 x 5.2	-	34	14	9	20	-	-
Mason Room	7.3 x 5.7	3.4	41	12	8	20	-	-
Sir Thomas Room	7.0 x 5.4	-	38	14	10	20	-	-
Ernest George Room	7.0 x 4.6	-	32	8	-	20	-	-
Rev John Room	6.2 x 3.4	3.4	21	10	10	15	-	-

Technical	Door W (m)	Floor Level	Daylight	Blackout	Dimmers	13 Amp Sockets	Telephone Points	Superfast Broadband
Langford Room	0.88	First	Yes	No	No	4	1	Yes
Owen Jones Room	0.88	First	Yes	Yes	No	2	1	Yes
Lady Evelyn Room	0.88	First	Yes	No	No	2	1	Yes
Mason Room	0.88	First	Yes	No	No	2	1	Yes
Sir Thomas Room	0.88	First	Yes	No	No	5	1	Yes
Ernest George Room	0.88	First	Yes	No	No	8	1	Yes
Rev John Room	1.00	First	Yes	No	No	2	0	Yes

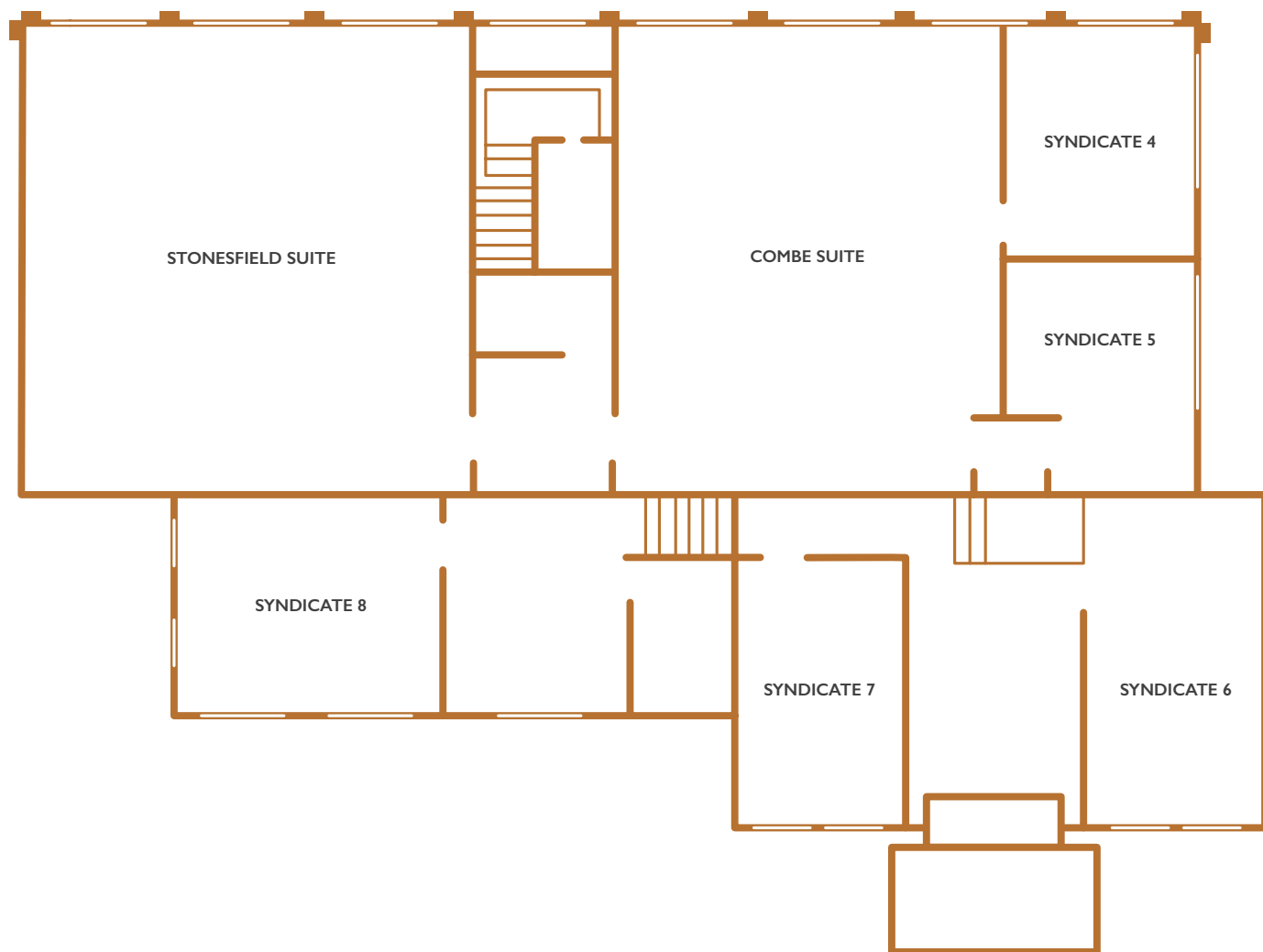
## Lindsay Building - Ground Floor Floor Plans & Capacity



Room	Dimensions (m)	Height (m)	Area (sqm)	Boardroom	U-shape	Theatre	Classroom	Cabaret
Wilcote	12 x 8.8	3.2	105	34	30	80	36	50
Syndicate 1	-	-	-	12	-	-	-	-
Syndicates 2-4	-	-	-	8	-	-	-	-

Technical	Door W (m)	Floor Level	Daylight	Blackout	Dimmers	13 Amp Sockets	3 phase	Air Con	Telephone Points	Superfast Broadband
Wilcote	0.75	Ground	Yes	Yes	No	6	-	Yes	1	Yes
Syndicate 1	0.75	Ground	Yes	Yes	No	6	-	Yes	1	Yes
Syndicates 2-4	0.75	Ground	Yes	Yes	No	2	-	Yes	1	Yes

## Lindsay Building - First Floor Floor Plans & Capacity



Room	Dimensions (m)	Height (m)	Area (sqm)	Boardroom	U-shape	Theatre	Cabaret
Combe	7.9 x 8.8	3.2	69	22	20	36	25
Syndicate 4-7	-	-	-	8	-	-	-
Stonesfield	8.9 x 8.8	3.2	78	26	22	50	30
Syndicate 8	-	-	-	10	-	-	-

Technical	Door W (m)	Floor Level	Daylight	Blackout	Dimmers	13 Amp Sockets	3 phase	Air Con	Telephone Points	Superfast Broadband
Combe	0.75	First	Yes	Yes	No	10	-	Yes	1	Yes
Syndicate 4-7	0.75	First	Yes	Yes	No	6	-	No	1	Yes
Stonesfield	0.75	First	Yes	Yes	No	16	-	Yes	1	Yes
Syndicate 8	0.75	First	Yes	Yes	No	6	-	No	1	Yes

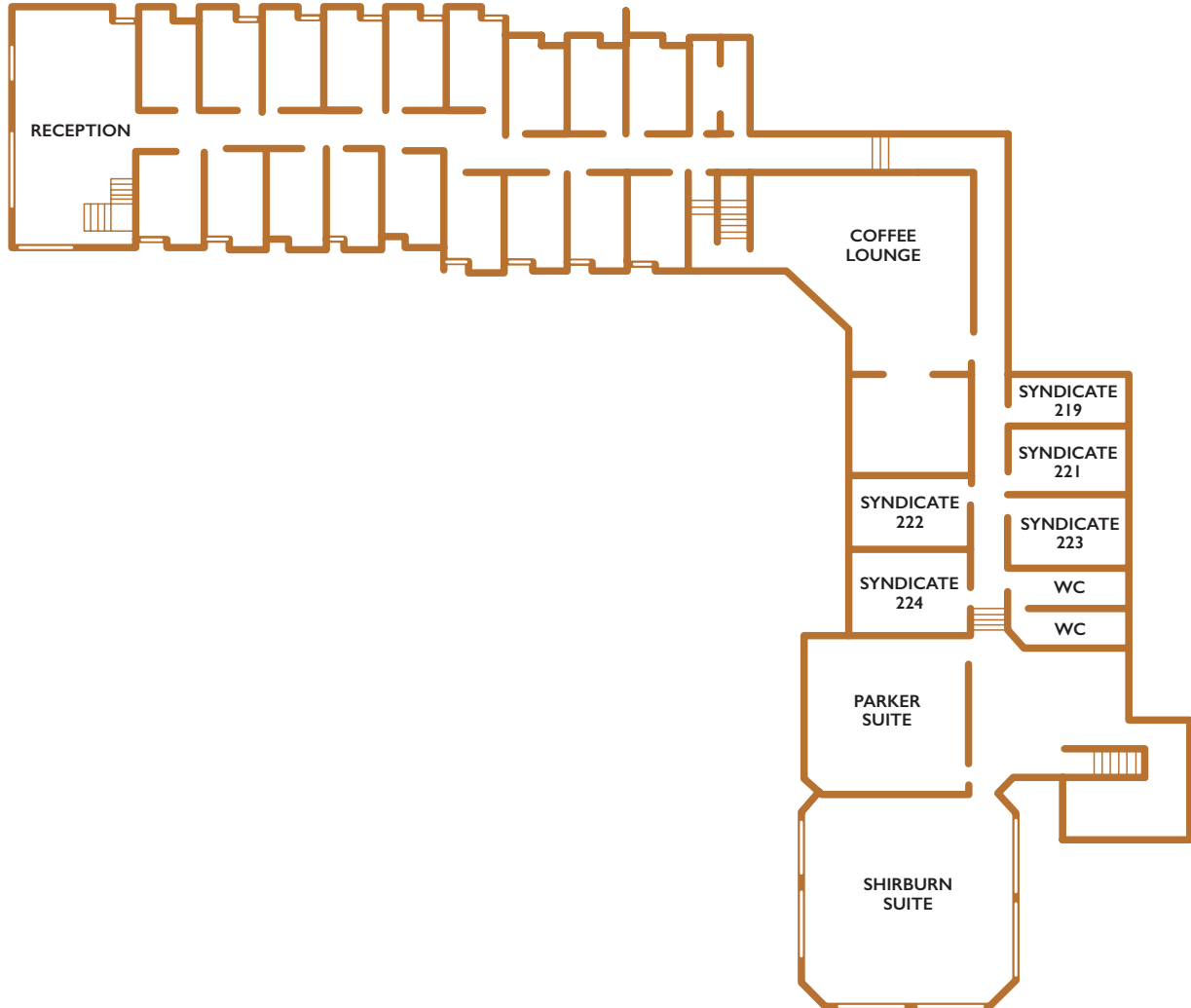
## Eynsham Court - Ground Floor Floor Plans & Capacity



Room	Dimensions (m)	Height (m)	Area (sqm)	Boardroom	U-shape	Theatre	Classroom	Cabaret
Harcourt Suite	10.5 x 10	3.2	105	33	30	100	48	50
Bazley	7.9 x 8	3.2	63.2	22	18	40	24	21
Syndicate Rooms	-	-	-	10	-	-	-	-

Technical	Door W (m)	Floor Level	Daylight	Blackout	Dimmers	13 Amp Sockets	3 phase	Air Con	Telephone Points	Superfast Broadband
Harcourt Suite	1.3	Ground	Yes	Yes	No	24	-	Yes	1	Yes
Bazley	0.75	Ground	Yes	Yes	No	18	-	Yes	1	Yes
Syndicate Rooms	0.75	Ground	Yes	Yes	No	4	-	Yes	1	Yes

## Eynsham Court - First Floor Floor Plans & Capacity



Room	Dimensions (m)	Height (m)	Area (sqm)	Boardroom	U-shape	Theatre	Classroom	Cabaret
Shirburn Suite	10.5 x 10	3.2	105	33	30	100	48	50
Parker	7.9 x 8	3.2	63.2	22	18	40	24	21
Syndicate Rooms	-	-	-	10	-	-	-	-

Technical	Door W (m)	Floor Level	Daylight	Blackout	Dimmers	13 Amp Sockets	3 phase	Air Con	Telephone Points	Superfast Broadband
Shirburn Suite	1.3	First	Yes	Yes	No	24	-	Yes	1	Yes
Parker	0.75	First	Yes	Yes	No	18	-	Yes	1	Yes
Syndicate Rooms	0.75	First	Yes	Yes	No	4	-	Yes	1	Yes